



NetScan™ 4000

Duplex , Color Network Scanner

Share scanner access
with network efficiency
and connectivity



- **Scan to E-mail, Folder, Fax, FTP, Print**
- **Scan both sides of your documents in duplex mode**
- **Flatbed and Auto Document Feeder (holds 50 pages)**
- **Bright LCD Touch Screen**
- **Full Send/Receive Fax Functionality**
- **Manage Remotely through embedded webpage**
- **Store up to 2,000 email addresses**
- **Supports LDAP email directories**
- **Secure administration tools, user access and authentication supported**

Network accessible scanning achieves two major goals for your document workflow and capture: scanners can be easily and conveniently located in common areas without a PC connected and the scanner can access broad network connections to file servers, email servers, FTP locations and network printers and fax servers. Direct connect scanners are a vital part of your document capture strategy but now network scanners can meet your shared scanner needs with great efficiency and ease of use.

The NetScan 4000 can easily support small to medium workgroups and offices through secure multi-user access and easy administration through an embedded form-based web page configuration and a standard Ethernet connection. So you don't need an expensive IT department or network contractor to begin scanning documents to local servers, FTP location, convenient email delivery anywhere on the internet or simple fax sending and receiving through standard phone line.

Scan to email

The scan-to-email feature lets you scan paper-based documents in full color and e-mail them in PDF, JPEG, or TIFF file formats directly from the NetScan 4000. As a result, you can send the scanned document simultaneously to a lot of multiple addresses or distribution lists. The NetScan 4000 supports LDAP (lightweight directory access protocol) for direct access to Microsoft Exchange Server email directories. Plus, there are a total of 2,000 custom e-mail addresses which can be added to the device.

Scan to filing

The scan-to-filing feature allows you to scan documents and save them to a PC folder or to any server in the network or externally on the internet through FTP, HTTP, HTTPS, or CIFS. The built-in Ethernet connection gives the device full or limited network privileges as defined by the network administrator.

Digital copying

When the NetScan 4000 is directly connected to a PCL-enabled inkjet or laser printer through its USB connection, the configuration turns into a powerful digital copier. Through the easy-to-use front panel, you can make black and white copies just like you do on a regular copy machine.

Multiple pages sending

With an Auto Document Feeder (ADF), the NetScan 4000 allows a stack of 50-page document(s) to be continuously scanned and transmitted at one time in reliable quality to increase your efficiency.

Fax

When the NetScan 4000 is connected to a supported printer and a telephone line, this configuration can be used as a send/receive fax machine that prints incoming faxes. Add to this a phonebook speed dial, and broadcast fax directory to send faxes to large groups to increase your efficiency. There is a full numeric keypad to enter fax phone numbers as simply as using your traditional fax machine.

Large & easy-to-use touch panel

A large 7-inch, bright color LCD shows all operation modes clearly. Simply make a few touches on the LCD screen, you can finish your job within seconds. The screen is highly responsive to your touch and the soft QWERTY keyboard makes any data entry easy and fast.

Visioneer NetScan 4000

Intelligent Scanning on Your Network

The NetScan 4000 packs a lot of functionality, and most of it is already inside the device. Let's walk through the many tools that will make your network scanning experience efficient and productive.



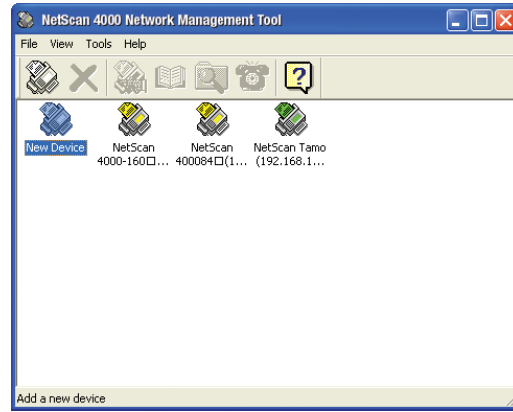
The NetScan 4000 front panel is a bright 7" LCD touch screen. The menus are easy to navigate and a QWERTY soft keyboard makes any entries easy.

Scan to email

Connected to the network by an ethernet connection and an SMTP server, the NetScan 4000 allows you to digitize your document first and then send the scanned image as PDF or TIFF attachment in color or black and white via email with the touch of a button. You can access your email server's address book through the NetScan 4000's support of LDAP.

Scan to Filing

With a touch of the folder soft key and selection of your destination server, your documents are scanned then stored to the remote servers instantly. The scan-to-file feature offloads the mail server from handling large attachments.



The NetScan 4000 Network Management Tool allows the administrator to easily configure one or multiple NetScan 4000 devices on the network. Large email address lists or filing/FTP/HTTP destinations can also be imported or exported from one NetScan 4000 to another on the network. Additionally, you can update firmware and duplicate the administrator settings from one NetScan 4000 to another.

Web Administrative Manager

The NetScan 4000 provides a convenient way to manage the email addresses and profiles (filing destinations) through a convenient web administrative manager. By simply typing the machine's IP address in the URL field of your browser, the web administrative manager appears. The form driven web page allows you to easily create up to 2000 email addresses and 50 filing destinations to manage your document scanning at the device and on the network.

Product Specifications

Model Number	VNS-4000U
Optical Resolution	600 dpi
Output Bit Depth	24-bit color, 8-bit grayscale, 1-bit b&w
Scanning Speed (ADF, 200 dpi)	20 ppm, 14 ipm Black & White 15 ppm, 14 ipm Grayscale 10 ppm, 10 ipm Color
Document Size – Flatbed	Max. 8.5" x 11.7" (216 x 296 mm)
Document Size – ADF	Max. 8.5" x 14" (216 x 355 mm) Min. 5.5" x 5.5" (140 x 140 mm)
Light Source	CCFL - Cold Cathode Fluorescent Lamps
Sensor	CCD - Charge-Coupled Device
Dimensions	18.9" x 18.7" x 8.1" (480 x 475 x 205 mm)
Weight	22.5 lbs. (10.2 kg)
ADF Capacity	50 pages (20 lb. or 75 g/m ²)
Daily Duty Cycle	1,000 pages
Connection Interface	Ethernet 10Base T / 100Base TX auto-registration
Protocols	TCP/IP, HTTP, DNS, DHCP
Email Spec	
Communication Protocols	SMTP, MIME, LDAP
Max. Email Addresses Stored	2,000
Mail Servers Supported	Microsoft Exchange Server 2000/2003/2007, Lotus Mail Server 5.0, Lotus Domino 7.x & 8.x, Red Hat 7.0, Mac Mail Server OS 9.04
Supported File Formats	PDF, TIFF, MTIFF, JPEG
Filing Spec	
Communication Protocols	FTP, HTTP, CIFS, AVPP, HTTPS
Supported File Formats	PDF, TIFF, MTIFF, JPEG
Max. Folders	50
Copy Spec	
Zoom	25% - 400% in 1% increments, fit to page
Copies	Up to 99
Collate	Sort / Stack
Fax Spec	
Port	Dual RJ-11 for Phone & Line
Modem Speed	33.6 Kbps
Page Memory	2 MB

Contents

- NetScan 4000 Scanner
- Power Supply
- USB Cable for Printer Connection
- RJ-11 telephone cable for fax
- Quick Install Card
- CD-ROM including:
 - Network Management Tool
 - User's Manual



For more information about Visioneer scanners, visit www.visioneer.com

